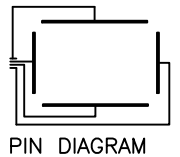
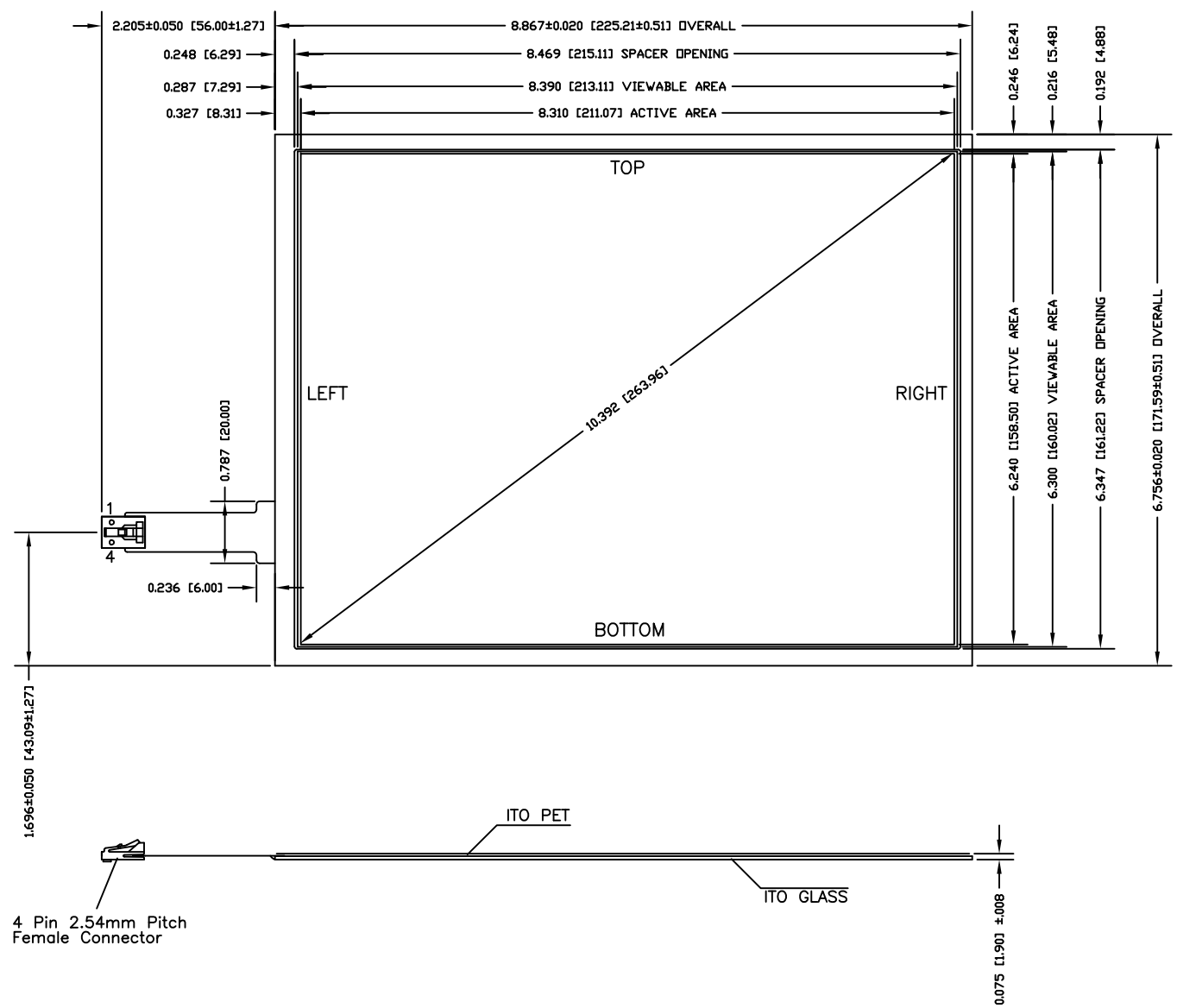


REV	INITIALS	DATE	DESCRIPTION



- NOTES:
1. TOLERANCE ±.020 UNLESS NOTED OTHERWISE.
 2. TOP CONDUCTIVE LAYER TO HAVE AN ANTI-GLARE HARDCOATED SURFACE..
 3. PIN ONE IS DESIGNATED BY THE NUMERICAL NUMBER 1 BY CONNECTOR END.
 4. PINDUT TO BE AS INDICATED.
PIN 1 - TOP.
PIN 2 - LEFT.
PIN 3 - BOTTOM.
PIN 4 - RIGHT.
 5. TAIL TYPE: IMMERSION GOLD PLATED FPC WITH AMP LATCH HOUSING

BERGQUIST TOUCH PRODUCTS			
301 WASHINGTON STREET CANNON FALLS, MN 55009			
TITLE:		10.39 DIAGONAL 4-WIRE RoHS COMPLIANT	
DRN:	MLR	DATE:	5/30/08
CHKD:		DATE:	
APVD:		DATE:	
TOL: ±0.020		DWG # 9541A	
PART #:			400429
			REV